



## 2016 - NOW

Technological innovation and diversified development stage (16 years to now). In order to cope with market competition, Alastin Marine continues to increase technological innovation.

## 2009 - 2015

Market expansion stage: With the continuous advancement of technology and the growth of market demand, we are actively expanding the market share of our products and developing overseas business.

## 1998 - 2008

Creation and stabilization phase (establishment to 10 years) In the early days of the company's establishment, and focused on establishing a sound organizational structure and management system.

MARINE PARTS SUPPLY

**青岛阿拉斯丁户外用品有限公司**  
QINGDAO ALASTIN OUTDOOR PRODUCTS CO., LTD.

**HIGH QUALITY PRECISION CASTING**

**Industry Coverage**

Yachts, Healthcare, Machinery

**ALASTIN<sup>®</sup>**

E-mail: [andyzhang@alastin-marine.com](mailto:andyzhang@alastin-marine.com)

Mob: +86-15865772126

Contacts: Andy Zhang

Web: [www.alastinmarine.com](http://www.alastinmarine.com)

Address: Qingdao City, Shandong Province, China



# COMPANY PROFILE

## 公司简介

我们是一家专业从事船锚、缆桩、鱼竿座、船梯、方向盘、合页等产品的研发、生产销售和服务的公司，位于山东省。我们致力于严格的质量控制和周到的客户服务，经验丰富的工作人员随时可以讨论您的需求，确保客户完全满意。我们拥有数控车床、盐雾测试、光谱仪测试设备，拉力机等严格控制产品质量。我们还拥有ISO/CE/SGS/TUV证书。我们的产品北美、欧洲、中东等国家和地区很受欢迎。无论是从我们的目录中选择当前产品，还是为您的项目寻求工程帮助。我们有专业的研发团队，接受OEM&ODM定制。我们以出厂价格提供稳定的供应，大量的现货库存。请随时向我们发送采购需求，项目标准，期待合作！

We are a professional company engaged in boat anchor, bollard, fishing rod holder, boat ladder, steering wheel, hinge and other products' R & D, production, sales and service, located in Shandong Province.

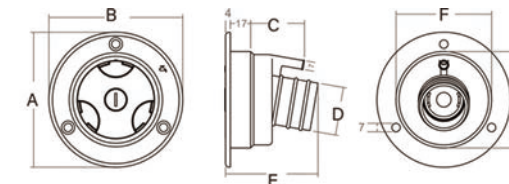
We are committed to strict quality control and attentive customer service, our experienced staff are always available to discuss your needs and ensure complete customer satisfaction. CNC lathes, salt spray testing, spectrometer testing equipment, tension machines and other equipment are used to strictly control product quality. With ISO/CE/SGS/TUV certificates, our products are very popular in North America, Europe, the Middle East and other countries and regions.

OEM&ODM customization is accepted. Whether selecting a current product from our catalog or seeking engineering help for your project, we have professional teams to support you. We provide a stable supply at the factory price and adequate stock. Please feel free to send us procurement requirements or project standards, looking forward to cooperation!



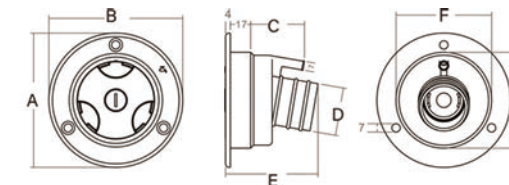


# RV ACCESSORIES



Code	Color	Amm	Bmm	Cmm	Dmm	Emm	Fmm	Gmm
ALS6801R-W	White	112	112	45	40	77	80	80

GRAVITY WATER INLET OF RV  
房车重力加水口



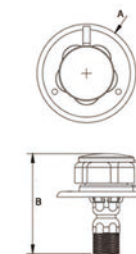
Code	Color	Amm	Bmm	Cmm	Dmm	Emm	Fmm	Gmm
ALS6802R-W	White	112	112	45	40	77	80	80
ALS6802R-B	Black	112	112	45	40	77	80	80

GRAVITY WATER INLET OF RV  
房车重力加水口



Code	Color	Amm	Bmm
ALS6803R-W	White	75	76.5

GRAVITY WATER INLET OF RV  
房车重力加水口



METAL HOSE OF EXTERNAL SINGLE KNOB SHOWER  
外置单旋钮淋浴器金属软管

Code	Color	Size mm	Opening mm
ALS6804R- W	White	267x157x107	231x118
ALS6804R- B	Black	267x157x107	231x118





### EXTERNAL DOUBLE KNOB SHOWER METAL HOSE 外置双旋钮淋浴器金属软管



Code	Color	Size mm	Opening mm
ALS6805R-W	White	267x157x107	231x118
ALS6805R-B	Black	267x157x107	231x118

### PLASTIC HOSE OF EXTERNAL DOUBLE KNOB SHOWER 外置双旋钮淋浴器塑料软管



Code	Color	Size mm	Opening mm
ALS6806R-W	White	267x157x107	231x118
ALS6806R-B	Black	267x157x107	231x118

### SHOWER HEAD 淋浴器喷头



Code	Size mm	Weight (kg)
ALS6807R	130x65x50	0.13

### FOLDING FAUCET 折叠水龙头



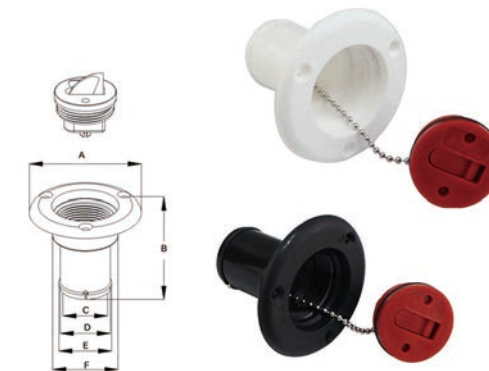
Code	Two types
ALS6808R	Single handle faucet
ALS6809R	Duble handle faucet

### SINGLE COOLING FAUCET 单冷水龙头



Code	Two types	Opening mm	Weight (kg)
ALS6810R	Cold water supply	34 mm	1.7kg

### PLASTIC FUEL FILLETR FOR RV 房车加油口



Code	Amm	Bmm	Cmm	Dmm	Emm	Fmm	Color
ALS6811R-W	85	70	34	38	40	50	White
ALS6811R-B	85	70	34	38	40	50	Black

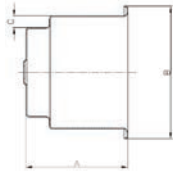
### PLASTIC FUEL FILLETR FOR RV 房车加油口



Code	Amm	Bmm	Cmm	Dmm	Emm	Fmm	Color
ALS6812R-W	85	70	34	38	40	50	White
ALS6812R-B	85	70	34	38	40	50	Black

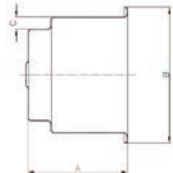


### COLOR RV CUP HOLDER 彩色房车杯托



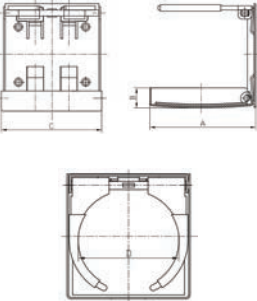
Code	A mm	B mm	C mm	Color
ALS6813R-R	98	108	9.5	Red
ALS6813R-B	98	108	9.5	Blue
ALS6813R-G	98	108	9.5	Green
ALS6813R-W	98	108	9.5	White

### RV CUP HOLDER 房车杯托



Code	A mm	B mm	C mm	Note
ALS6814R-S	98	108	9.5	All Polished
ALS6814R-A	98	108	9.5	Top Polished

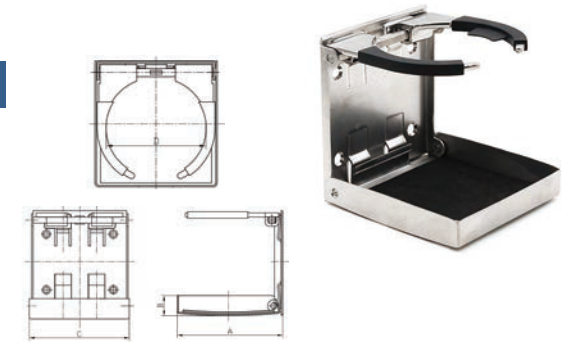
### CUP HOLDER - ADJUSTABLE 杯托 - 带管夹可调节



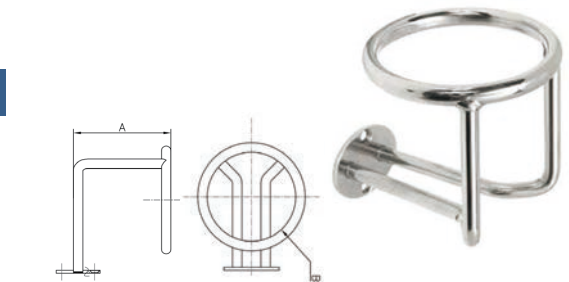
Code	A mm	B mm	C mm	D mm
ALS6815R-S	101.6	20.6	98.5	60-100
ALS6815R-A	114.3	20.6	111.1	60-100



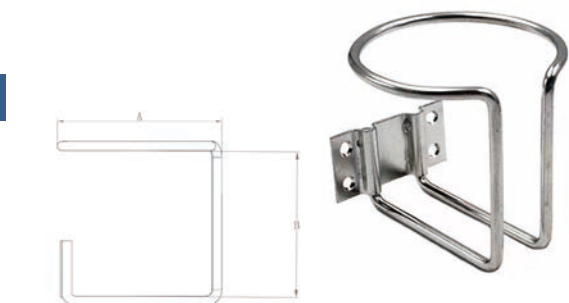
### CUP HOLDER -FOLDING 杯托-可折叠



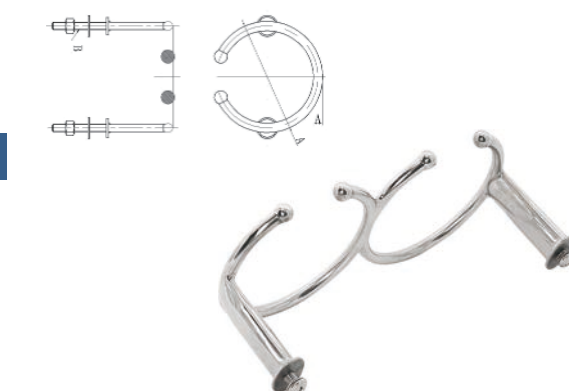
### CUP HOLDER -FIXED 杯托-固定式



### CUP HOLDER -FIXED 杯托-固定式



### CUP HOLDER -FIXED 杯托-固定式



Code	A mm	B mm	C mm	D mm
ALS6816R-S	101.6	20.6	98.5	60-100
ALS6816R-A	114.3	20.6	111.1	60-100

Code	A mm	B mm
ALS6817S	98.5	89

Code	A mm	B mm
ALS6818S	89	80.5

Code	A	B	Rings
ALS6819R-S	5/16" * 4-1/8"	5/16" * 2"	1
ALS6819R-M	5/16" * 4-1/8"	5/16" * 2"	2
ALS6819R-L	5/16" * 4-1/8"	5/16" * 2"	3



# INFORMATION FOR PROSPECTIVE AGENTS

We are accepting agent applications from reputable individuals and businesses, who are able to refer qualified and genuine clients to us. If you are interested in working with ALASTIN as one of our registered agent/representative. Kindly send the following information by email to: [andyzhang@alastin-marine.com](mailto:andyzhang@alastin-marine.com)

- Your name.
- If applicable, the Name of your Business and the Name of Business/Company Owners.
- Your Resume/CV (Detailed information about you).
- If applicable, your Business/Company Profile.
- Your Contact Address or Business Address.
- Phone number(s).
- Email address.
- Your Website and Social Media details/URL (if any).
- Information about your Primary Market(s) (i.e. cities where most of your clients will come from).
- Your Promotion and Marketing Tactics/Strategy.
- How did you hear about us? (e.g. family/friend, Facebook, Google search, Flyer, etc.).
- Optional: Any Additional Relevant Information.

Kindly note that to become an agent of ALASTIN, you must complete a 3-Step Screening Process. This is to ensure that we only work with trustworthy, professional, and reliable individuals/businesses. By providing the above information, you have completed Step 1. If selected, we will notify you by email on the next steps (i.e. steps 2 & 3).

Thank you in advance for your interest in working with ALASTIN!



Design and development



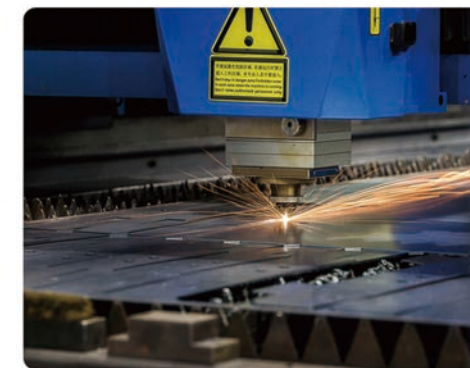
Marine grade raw materials



Mold manufacturing



Wax Pattern



Laser Cutting



Casting Pouring



Machining



Spectrometer Detection



Mirror Polishing



Welding



CNC Machine



Warehouse